

SiC Heating Elements



The Insulcon Group has a comprehensive range of Global Heating Elements. You will find these products in the Ceramic Industry, the Glass industry, the Aluminium Industry, the Electronic Industry, the Steel Industry, Laboratories etc.

Silicon Carbide Heating Elements are refractory, non-metallic electrical resistant products in solid rods or tubular form with a temperature range of 600-1600°C. When the element is electrically connected, a current passes through the element. Because the hot zone has a higher electrical resistant than the cold ends, the hot zone will generate heat.

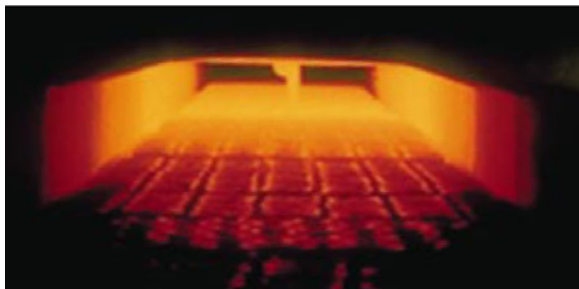
Why using SiC heating elements?

To heat your furnace with SiC heating elements is in many ways so obvious that the advantages are often overlooked. For example, with electrical heating you will save money, the refractories last longer, there are no flue gasses, your working environment is more pleasant, higher power can be radiated, there are favourably safety aspects, the temperature is more accurate and can be better controlled , etc.

When using our SiC Heating elements you have no fuel storage problems, no worries about fuel availability and no exhaust products to be ducted away.

Installed and operated according to our recommendations, our SiC heating elements can provide a long service life of several years, contributing to a long and trouble-free furnace operation.

When an element needs to be replaced it can be done whilst the furnace is at full operating temperature, without stopping your production.

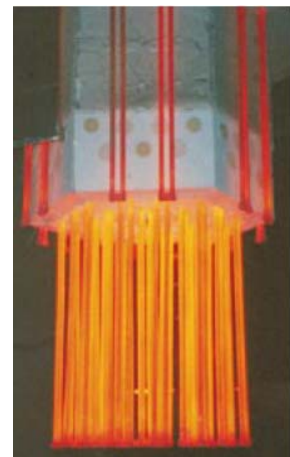


Advantages Silicon Carbide Heating Elements:

- Higher power can be generated
- No flue gasses
- Longer life time of the refractories
- Electrical heating will save money
- Electric furnace heating with our SiC heating elements is economical, dependable, clean, and safe.



MaxiHEAT furnace heater



Ladle pre-heater

INSULCON

LEADER IN HIGH TEMPERATURE SOLUTIONS

KERAMAB

LEADER IN HIGH TEMPERATURE SOLUTIONS



Member of the
INSULCON group

Applications



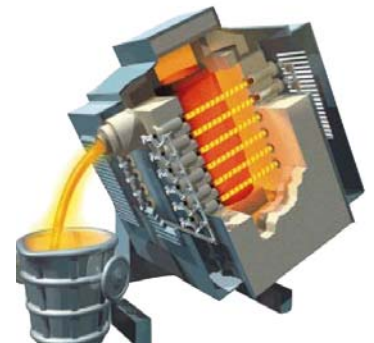
Laboratory Furnace

The Ceramic Industry

Insulcon's SiC Heating elements are being used in many of the kilns used in this industry. For example firing of ferrites and other ceramic components.

Laboratory and Test Furnaces

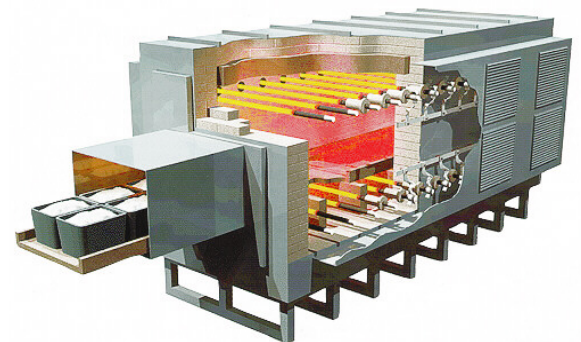
In the laboratory where small test furnaces are subjected to rigorous firing cycles at high operation temperatures, the furnace heating elements are required to withstand the stresses of intermittent operation. SiC Heating elements have been used successfully in many different environments in test laboratories.



Crucible furnace for non ferrous metals

The (Non) Ferrous Industry

In the Non-ferrous industry a lot of Insulcon's Heating elements are for example used for the melting and the holding of non-ferrous metals such as copper, aluminium and zinc. Elements are placed around the crucible on two or four sides, and their high power concentration facilitates rapid melting. Also immersion heaters are available.



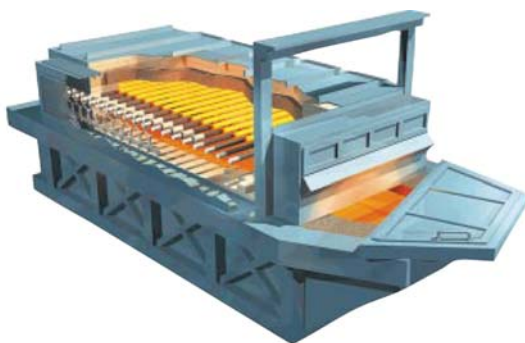
Pusher furnace for firing of ceramic powders

The Glass Industry

SiC Heating Elements are being used for the melting of glass and quartz on a laboratory or production scale.

The Electronic Industry

Electronic Industry SiC heating elements are being used for firing of fluorescent powders, electric components



Aluminium Melting and Holding furnace

For more detailed information about these products, please do not hesitate to contact one of our specialists.

Contact numbers:

The Netherlands - Insulcon B.V.

Tel: +31(0)167565750

Fax: +31(0)167566263

Belgium - Keramab N.V.

Tel: +32(0)37110278

Fax: +32(0)37110856

Germany - Insulcon GmbH

Tel: +49(0) 2162 249600

Fax: +49(0) 2162 2496029



Member of the
WUJON group

INSULCON

LEADER IN HIGH TEMPERATURE SOLUTIONS

KERAMAB

LEADER IN HIGH TEMPERATURE SOLUTIONS