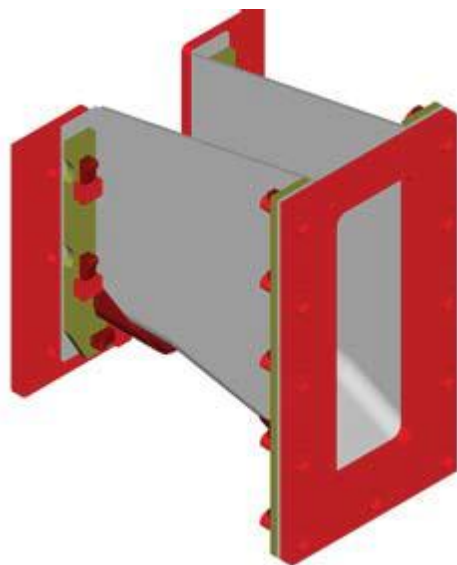


Please copy one form per type and dimension and email the completed form to wearflex@insulcon.com.

From	
Company	Department
Name	Your reference
Email	Phone
Design Data	
Measurements as indicated to the attached drawing;	
The tilting angle of the furnace and the location of the tilting point;	
If possible, the drawing of the "laundry assembly";	
If possible, the drawing of the "furnace cast spout assembly";	
If possible, photographs of "furnace – laundry assembly" during casting;	
If possible, photographs of "furnace – laundry assembly" in rest position;	
What is the casting temperature?;	
Which alloy are you using?;	
What is your flow level in the laundry joints?	
Laundry side:	



- Iron (Furnace and laundry side)
- Insulating material
- Steel
- Metal affirmative system

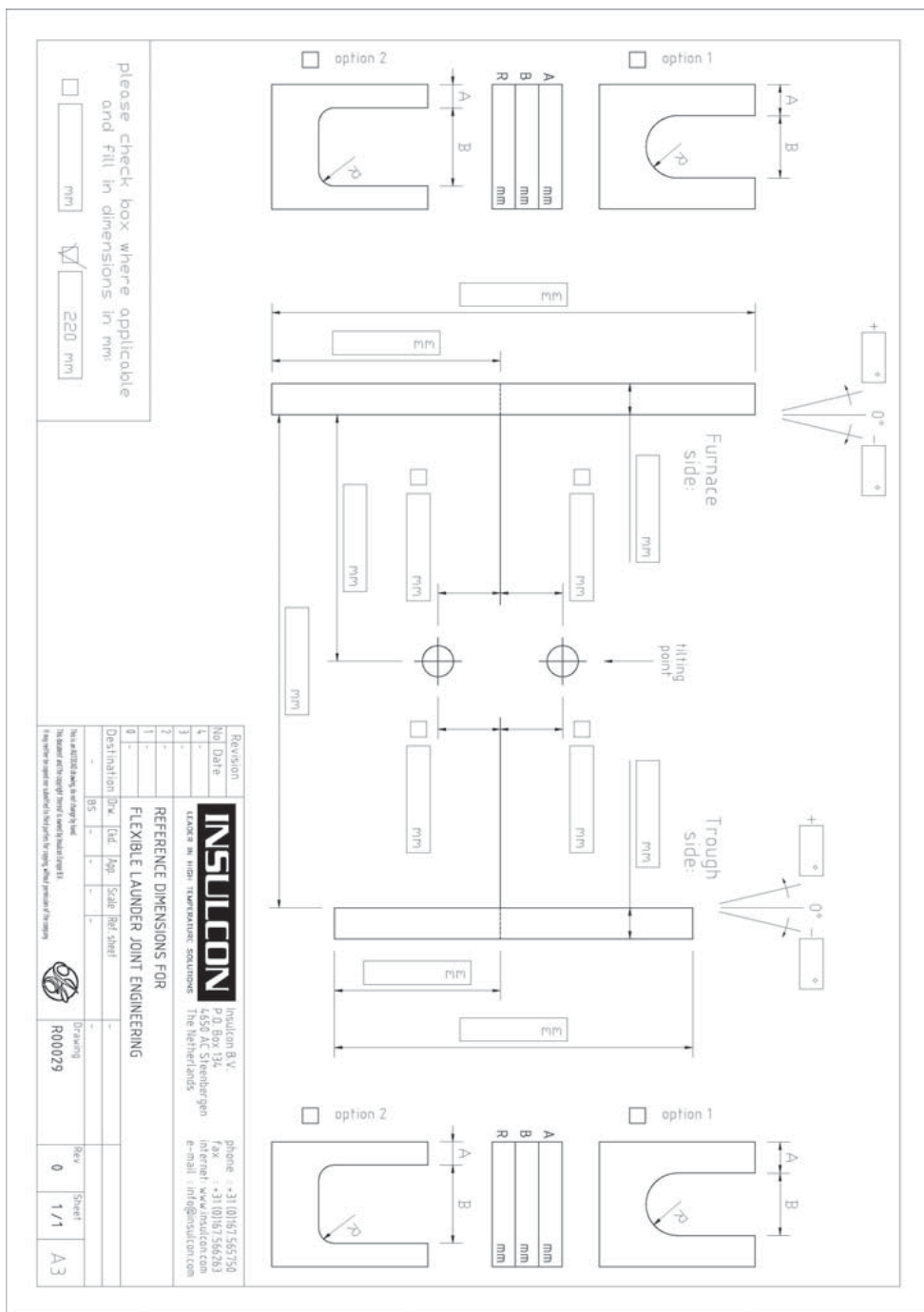
Insulcon B.V.
Zilverhoek 4
4651 SP Steenberg
The Netherlands
+31(0) 167 565750
info@insulcon.com

Keramab N.V.
Haverheidelaan 4
9140 Temse
Belgium
+32 (0) 3 7110278
sales@keramab.com

Insulcon GmbH
Weiserstr. 7
41468 Neuss
Germany
+49(0) 2131 408548-0
insulcongbh@insulcon.com

Insulcon Projects S.A.
Via Geretta 18
6900 Paradiso-Lugano
Switzerland
+41(0) 91911739-0
infoch@insulcon.com

Measurements:



Revision	No	Date
1	-	-
2	-	-
3	-	-
4	-	-
5	-	-

INSULCON
LEADER IN HIGH TEMPERATURE SOLUTIONS
1450 AC Steenberg
The Netherlands

phone : +31 (0)167 565750
fax : +31 (0)167 564763
internet : www.insulcon.com
e-mail : info@insulcon.com

REFERENCE DIMENSIONS FOR FLEXIBLE LAUNDER JOINT ENGINEERING

Destination	Dwg	Std	App	Scale	Ref sheet
BS	-	-	-	-	-

Drawings: R00029

Rev: 0
Sheet: 1/1
A3

Insulcon B.V.
Zilverhoek 4
4651 SP Steenberg
The Netherlands
+31(0) 167 565750
info@insulcon.com

Keramab N.V.
Haverheidelaan 4
9140 Temse
Belgium
+32 (0) 3 7110278
sales@keramab.com

Insulcon GmbH
Weiserstr. 7
41468 Neuss
Germany
+49(0) 2131 408548-0
insulcongbh@insulcon.com

Insulcon Projects S.A.
Via Geretta 18
6900 Paradiso-Lugano
Switzerland
+41(0) 91911739-0
infoch@insulcon.com