

INSULMOULD® MOULDABLES

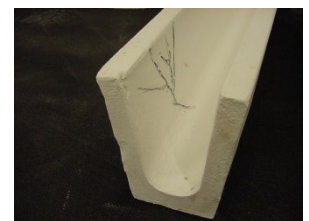
Insulmould® Mouldables are versatile products used as cast shapes, coatings, lining and for general refractory repairs. These products are based on high performance refractory fibres blended with selected inorganic and organic binders.

Insulmould® Mouldable is a highly sticky putty like product which requires only drying to produce a hard surfaced, low shrinkage efficient insulator. The tackiness provides good adhesion to the applied surface during drying, thereby ensuring a good refractory bond. Insulmould® is available in a ceramic- and non-ceramic execution.



Thermal Conductivity (W/m²K)

Mould Products	1100	1260	1260i
600 °C	0.20	0.21	0.22
800 °C	0.23	0.25	0.26
1000 °C	0.30	0.31	0.32



Installation



Insulmould® Mouldables can be installed with a trowel, spatula or caulking gun. It is easily shaped to the desired contour, by wetting the forming tool and moulding to shape. Drying involves removal of the internal water. If the mass is small (less than 0.5 kg) it can be immediately fired to its use temperature or directly applied to a hot surface if desired. For larger masses, the recommended practice is forced drying at 90-150 °C with a major uncovered surface exposed and adequate ventilation provided.

Typical Applications

- Hot and cold patching of refractory cracks
- Trough linings for aluminium and other non-ferrous metals
- Patching around burner blocks
- Coating for metal liners
- Collector Bar Sealing, significantly reducing oxidation of the cathode

For special applications we can also deliver a fast-drying Insulmould®, using a special Insulmould® accelerator. This mix can be delivered as a pre-fab mix.

Availability and shelf life

Insulmould® mouldable is available in 420 g cartridges, 5 kg and 25 kg pail and in handy sachets of 600 ml to 1500 ml. Insulmould has a shelf life of 6 months, if not exposed to high temperatures. Recommended shelf storage temperature is 5 - 20 °C.

Insulcon B.V. - The Netherlands - Tel: +31 (0) 167 565750
Insulcon GmbH - Germany - Tel: +49 (0) 2131 408548-0
Insulcon N.V. - Belgium - Tel: +32 (0) 3 711 02 78
Insulcon Projects S.A. - Switzerland - Tel: +41 (0) 91911739-0

INSULCON

LEADER IN HIGH TEMPERATURE SOLUTIONS
www.insulcon.com

Form: A1-217
 Effective: 15092022/ES
 Supersedes: 12072022/ES/ka
 All Rights Reserved
 LD; 120

INSULMOULD® MOULDABLES

Insulmould	1100 (low bio- persistent)	1260* (Ceramic)	1260i (low bio- persistent)
Chemical Composition (fired)-%			
Al ₂ O ₃		45-50%	
SiO ₂	65-68%	51-60%	68-78%
MgO	< 6%		20-30%
CaO	25-30%		
Typical Physical Properties			
Colour	Bluish White	White	Bluish White
Product Form	Tacky/Putty	Tacky/Putty	Tacky/Putty
Classification Temp. (°C) (feedstock fibre)	1100	1260	1260
Maximum Recommended Operating temp. (°C)	1100	1260	1260
Wet Density (kg/m ³)	1350	1350	1350
Dry Density (kg/m ³)	560	675	675
Modulus of Rupture (Dry)	>2,5 Mpa	>2,5 Mpa	>2,5 Mpa
Cold Crushing Strength	>2,8 Mpa	>3,0 Mpa	>2,8 Mpa
Minimum shelf life (Months)	6	6	3
Available amount of viscosity**	Low	Low/High	Low/High
**Various viscosities possible, on customer request			

* Also available in types Insulmould® 1260L, Insulmould® 1260LM and Insulmould® LMA. These types are produced with a special inorganic and organic binders. InsulmouldLMA has a low LOI (loss on ignition), Insulmould® 1260LM is less adhesive for the tooling during installing.

Insulcon B.V.- The Netherlands - Tel: +31 (0) 167 565750
 Insulcon GmbH - Germany - Tel: +49 (0) 2131 408548-0
 Insulcon N.V. - Belgium - Tel: +32 (0) 3 711 02 78
 Insulcon Projects S.A. - Switzerland - Tel: +41 (0) 91911739-0

INSULCON
 LEADER IN HIGH TEMPERATURE SOLUTIONS
www.insulcon.com

Form: A1-217
 Effective: 15092022/ES
 Supersedes: 12072022/ES/ka
 All Rights Reserved
 LD; I20